



# PRODUCT CATALOG

[www.healthsermedical.com](http://www.healthsermedical.com)



# MEDICAL EQUIPMENT

## Used MRI Machines

Our pre-owned MRI machines are an effective and cost-efficient solution. Purchasing a lower priced system is a preferable alternative for cost-conscious professionals. Find our selection of MRI machines for sale here.

### SIEMENS Verio 3.0T

#### Specifications

Brand: SIEMENS

Model: Verio 3.0T

Year of make: 2009

Channels: 32

Gradient: VQ

Software version: VB17A-SP4

Item number: 004626

Status: In Stock



## Description

The Siemens Aera maximizes efficiency and reliability. The system lets you optimize your MRI processes, reduce staff workload, and improve your return-on-investment. The unique application portfolio addresses global trends such as the demographic shift – making it possible for you to always offer your patients high-quality care and the latest MRI services.

#### Specifications

Brand: SIEMENS

Model: AERA 1.5T

Year of make: 2010

Channels: 48

Gradient: 1.5XQ

Software version: VE11E-SP02

Item number: 004604

Status: In Stock



## SIEMENS Trio 3.0T

### Specifications

Brand: SIEMENS

Model: Trio 3.0T

Year of make: 2007

Channels: 18

Gradient: Trio Gradient - 45 mT @ 200 T/m/s

Software version: VB19A-SP04

Item number: 004790

Status: In Stock



## SIEMENS Avanto Fit 1.5T

### Description

With its easy-to-use system and 205 cm whole-body imaging, the SIEMENS Avanto FIT 1.5T enables you to collect great images of the entire body and is applicable in every clinical field.

### Specifications

Brand: SIEMENS

Model: Avanto FIT 1.5T

Year of make: 2004, Upgraded to FIT in 2017

Channels: 48

Gradient: XQ - 45/200

Software version: VE11E-SP03

Item number: 004792

Status: In Stock



## GE Discovery MR450 1.5T

### Description

With only a few steps, the GE Discovery MR450 offers a powerful scanner that will provide you with extraordinary 1.5T imaging. The system is designed for speed which gives you amazing high-resolution exams and patient comfort.

### Specifications

Brand: GE

Model: Discovery MR450 1.5T

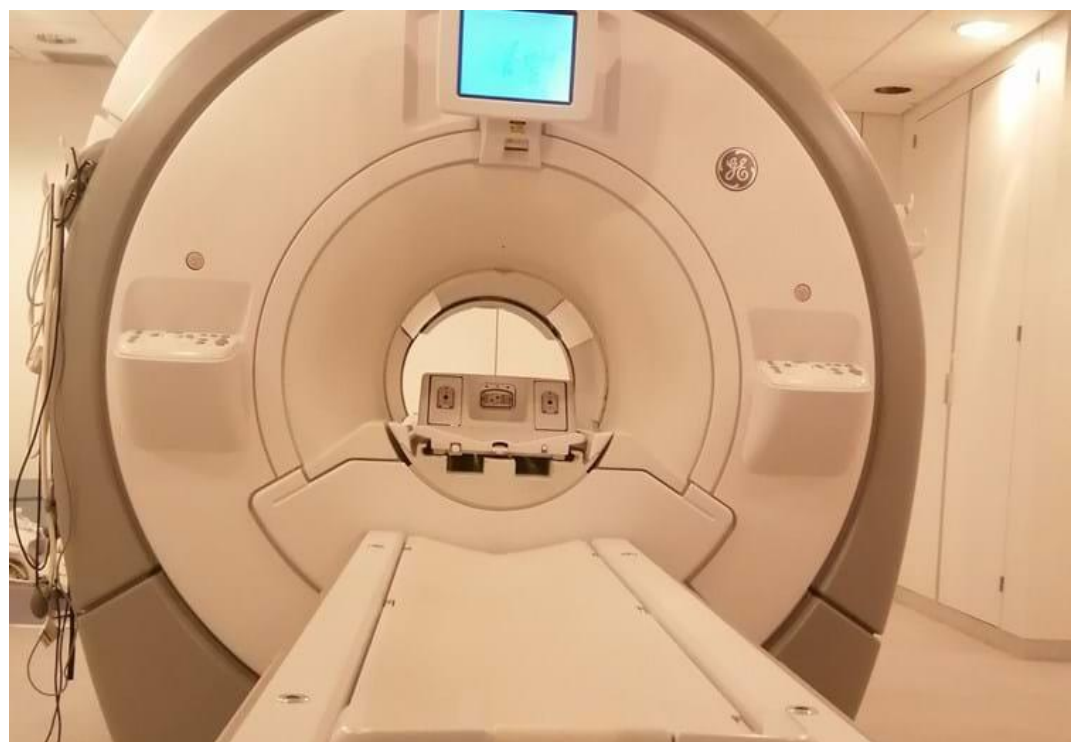
Year of make: 2010

Channels: 32

Gradient: XGD - 50 200

Item number: 004830

Status: In Stock



## GE MR450w GEMS 1.5T

### Specifications

Brand: GE

Model: MR450w GEMS  
1.5T

Year of make: 2012

Channels: 32

Software version:

DV25.0\_1549b

Item number: 004866

Status: Pending Incoming



## GE MR750w GEM 3.0T

### Specifications

Brand: GE

Model: MR750w GEM 3.0T

Year of make: 2012

Channels: 32

Software version:

DV25.1\_2132a

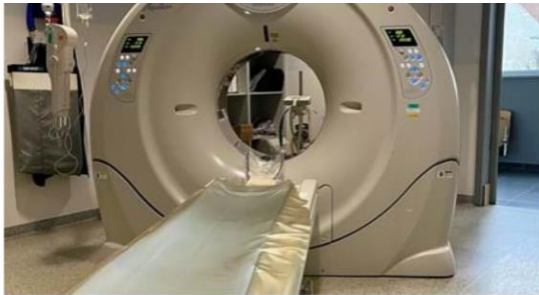
Item number: 004865

Status: Pending Incoming



# Used CT Scanners

Our pre-owned CT machines are an effective and cost-efficient solution. Purchasing a lower priced system is a preferable alternative for cost-conscious professionals. Find our selection of used CT machines for sale here.



**TOSHIBA Aquilion One 320**

Status: In Stock



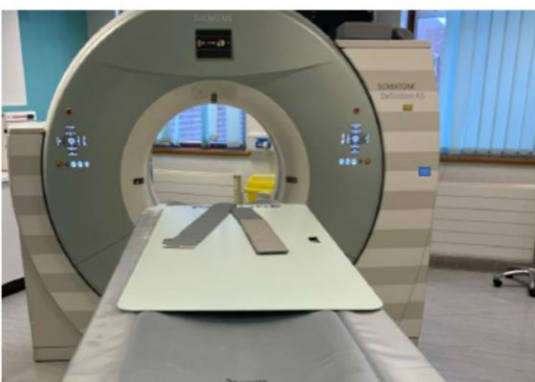
**SIEMENS Definition AS 64**

Status: In Stock



**SIEMENS Definition Edge 128**

Status: In Stock



**SIEMENS Definition AS 128**

Status: In Stock



**GE Revolution Evo 128**

Status: In Stock



**GE Revolution Evo 128**

Status: In Stock



**SIEMENS Definition AS+ 128**

Status: In Stock



**SIEMENS Definition AS 64**

Status: In Stock



**TOSHIBA Aquilion CX 128**

Status: In Stock

# Used CT Scanners



**GE Optima CT660 128**

Status: In Stock



**SIEMENS Definition Flash**

Status: In Stock



**PHILIPS Brilliance iCT 256**

Status: In Stock



**PHILIPS Access 16**

Status: In Stock

# Used Ultrasound Machines

Our pre-owned ultrasound machines are an effective and cost-efficient solution. Purchasing a lower priced system is a preferable alternative for cost-conscious professionals. Find our selection of Ultrasound machines for sale here.



**PHILIPS Visiq**

Status: In Stock



**SIEMENS Acuson Juniper**

Status: In Stock



**GE Voluson I**

Status: In Stock



**SIEMENS Acuson SC2000**

Status: In Stock



**GE Venue 40**

Status: In Stock



**GE Logiq e**

Status: In Stock

# Used Ultrasound Machines



**GE Logiq S8**

Status: In Stock



**GE Venue 40**

Status: In Stock



**SIEMENS Acuson X700**

Status: In Stock



**SIEMENS Acuson X700**

Status: In Stock



**PHILIPS ClearVue 650**

Status: In Stock



**PHILIPS ClearVue 650**

Status: In Stock



# Used Cath Lab Systems

Our pre-owned Cath Lab systems are an effective and cost-efficient solution. Purchasing a lower priced system is a preferable alternative for cost-conscious professionals. Find our selection of Cath Lab machines for sale here.



## GE Innova IGS 520

### Specifications

Brand: GE

Model: Innova IGS 520

Year of make: 2012

Tube year of make: CHANGED  
10.11.2020

Item number: 004818

Status: In Stock



## SIEMENS Artis Zee

### Description

Tackle every challenge with the SIEMENS Artis Zee. The system is proven to be helpful in optimizing your productivity while improving your confidence in the clinical field. With an ease, the SIEMENS Artis Zee provides you with great image quality and flexibility in your overall workflow.

### Specifications

Brand: SIEMENS

Model: Artis Zee

Year of make: 2012

Tube year of make: 2019 and 2016

Item number: 004836

Status: In Stock



## SIEMENS Artis Zee Floor

### Specifications

Brand: SIEMENS

Model: Artis Zee Floor

Year of make: 2011

Software version: ArtisVC21C

Tube year of make: 2023

Tube type: Megalix cat plus  
125/40/90 -121GV

Item number: 004857

Status: In Stock

# Used X-ray Machines

Our pre-owned X-ray machines are an effective and cost-efficient solution. Purchasing a lower priced system is a preferable alternative for cost-conscious professionals. Find our selection of used X-ray machines for sale below.



## PHILIPS Essenta DR

### Specifications

Brand: PHILIPS

Model: Essenta DR

Year of make: 2007

Tube type: SRO33/100

Item number: 2502033

Status: In Stock



## PHILIPS Multi Diagnost Eleva

### Specifications

Brand: PHILIPS

Model: Multi Diagnost Eleva

Year of make: 2011

Tube year of make: 2011

Item number: 004778

Status: In Stock



## PHILIPS Multi Diagnost Eleva

### Specifications

Brand: PHILIPS

Model: Multi Diagnost Eleva

Year of make: 2011

Tube type: SRM 0608 ROT-GS 505.

Tube year of make: 2021

Item number: 004611

Status: In Stock

# Used C-arms

Our pre-owned C-arms are an effective and cost-efficient solution. Purchasing a lower priced system is a preferable alternative for cost-conscious professionals. Find our selection of used C-arms for sale here.

## SIEMENS Arcadis Varic

### Description

The Siemens Arcadis Varic is an advanced multipurpose C-arm. The system has a wide range of applications such as orthopedics, trauma and vascular surgery, or urology. Its full post-processing capabilities allow easy integration in advanced clinical workflow.

### Specifications

Brand: SIEMENS  
Model: Arcadis Varic  
Item number: 2501681  
Status: In Stock



## PHILIPS BV-Libra

### Description

With hardly any problems, the BV-Libra C-arm makes sure to closely and precisely examine your patients. With the BV-Libra you are able to examine the tightest spots and with an ease you can direct the arm at your preference.

### Specifications

Brand: PHILIPS  
Model: BV-Libra  
Item number: 2501945  
Status: In Stock



## GE OEC 9900 Elite

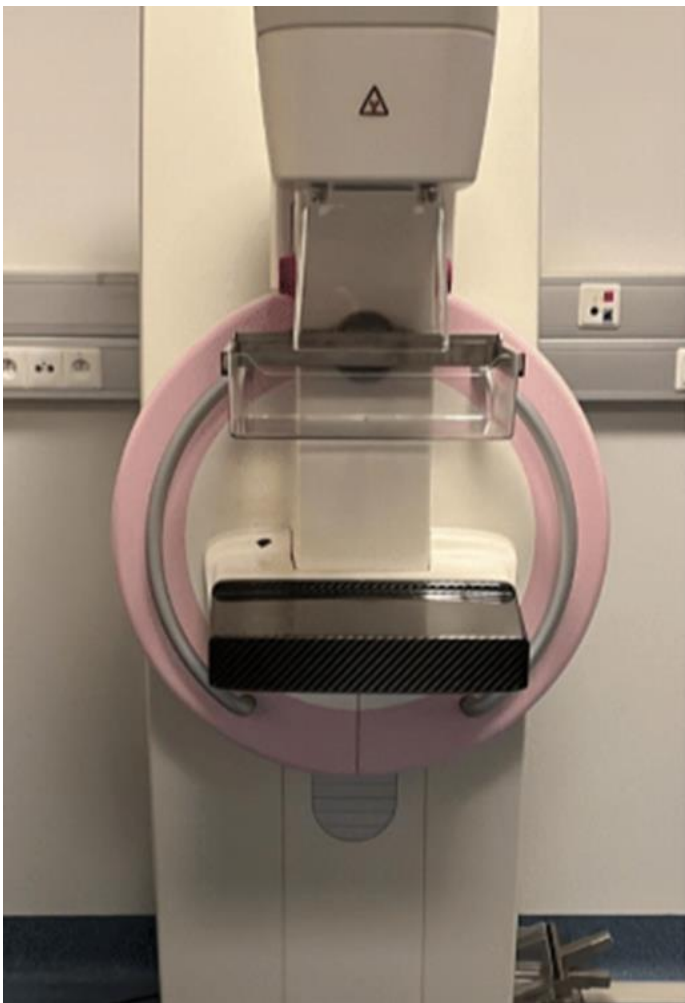
### Specifications

Brand: GE  
Model: OEC 9900 Elite  
Item number: 2502019  
Status: In Stock



# Used Mammography Machines

Our pre-owned Mammography machines are an effective and cost-efficient solution. Purchasing a lower priced system is a preferable alternative for cost-conscious professionals. Find our selection of Mammography machines for sale below.



## SIEMENS Mammomat Inspiration

### Specifications

Brand: SIEMENS

Model: Mammomat Inspiration

Year of make: 2008

Item number: 004574

Status: In Stock



## GE Senographe Essential

### Description

Allow yourself to deliver high-quality care for your patients with the Senographe Essential Mammography. With this system, you can perform a great variety of breast examinations and with its outstanding image quality, you are able to detect every possible mammo-graphic finding.

### Specifications

Brand: GE

Model: Senographe Essential

Year of make: 2012

Item number: 004603

Status: In Stock

# Used Ultrasound Probes

AGITO Medical offers an extensive selection of ultrasound probes to hospitals, clinics, biomedical engineering departments and service providers. Our selection covers convex, linear, trans-vaginal, cardiac and many others. Find our selection of Ultrasound Probes for sale below.



## GE 5S

### Specifications

Brand: GE  
Model: 5S  
Condition: Used  
Part number: 2347469  
Item number: 2501058  
Status: In Stock



## GE 7S

### Specifications

Brand: GE  
Model: 7S  
Condition: Used  
Part number: 2347471  
Item number: 2501060  
Status: In Stock



## GE 10C-D

### Specifications

Brand: GE  
Model: 10C-D  
Condition: DEMO  
Part number: 5476030  
Item number: 2500178  
Status: In Stock

# Other Equipment and Mobile Units

Health Serv Medical carries a wide selection of tested pre-owned imaging equipment including PET/SPEC/CT, Injectors and CR/Processing.

Our extensive network and more than 15 years of experience dealing with used medical equipment, makes it possible for us to offer you high quality system at a good price.

Are you looking to buy a mobile rental solution? Please look at our current selection below.



**MEDRAD Spectris Solaris EP**

Status: In Stock  
Modality: Injector



**PHILIPS Allura Centron**

Status: Pending Incoming  
Availability: Subject to availability until end of rental contract  
Modality: Mobile Units – Cath Lab



**PHILIPS FRU, COIL ASSY, PHC 3.0T 8CH HRK**

Status: In Stock  
Modality: Coils



**PHILIPS dS SHOULDER 8CH 3.0T, COIL**

Status: In Stock  
Modality: Coils



**PHILIPS dS Small Extremity 8CH 1.5T**

Status: In Stock  
Modality: Coils



**PHILIPS FRU, COIL ASSY, PHC 1.5T 8CH HRK**

Status: In Stock  
Modality: Coils

# Other Equipment and Mobile Units



**PHILIPS FRU, FOOT ANKLE COIL 8 3.0T iRF**

Status: In Stock  
Modality: Coils



**PHILIPS dS SHOULDER 8CH 1.5T**

Status: In Stock  
Modality: Coils



**PHILIPS DS FOOTANKLE 8CH 1.5T**

Status: In Stock  
Modality: Coils



## PHILIPS BrightView XCT

### Description

Philips BrightView XCT is a SPECT/CT system designed entirely for nuclear medicine. BrightView XCT offers premium CT resolution at low dose levels. The system can acquire the entire heart volume in just one rotation and permits patients to breathe normally during SPECT and CT acquisitions.

### Specifications

Brand: PHILIPS  
Model: Brightview XCT  
Year of make: 2011  
Item number: 004884  
Status: Pending Incoming  
Modality: PET/SPECT



## GE Discovery IQ

### Specifications

Brand: GE  
Model: Discovery IQ  
Year of make: Installed on 30/08/2017  
Tube type: PERFORMIX 40-PLUS  
Tube year of make: Changed on 06/2020  
Tube year of make: Changed on 06/2020  
Item number: 004887  
Status: Pending Incoming  
Modality: PET/SPECT

# Rental Solutions

## Imaging Rental Solutions

Our rental solutions fleet consist of over 50 units including both mobile rental trailers and relocatable units from all major original equipment manufacturers such as Philips, Siemens, GE and CANON/Toshiba.

We have a variety of MRI, CT and Cath Lab systems in the fleet and we are continually expanding it, to ensure that we can meet our customers' expectations and needs.



**Support Unit (04-05)**

Support Units



**Philips Ingenia Ambition 1.5T (MR52)**

Relocatable



**Philips Ingenia Ambition 1.5T (MR51)**

Relocatable



**Siemens Sola 1.5T (MR49)**

Relocatable



**GE Signa Voyager 1.5T (MR47)**

Trailer



**Philips Ingenia 1.5T (MR46)**

Trailer





**Siemens Aera 1.5T (MR45)**

Trailer



**Siemens Aera 1.5T (MR44)**

Trailer



**Siemens Aera 1.5T (MR43)**

Trailer



**Siemens Aera 1.5T (MR42)**

Trailer



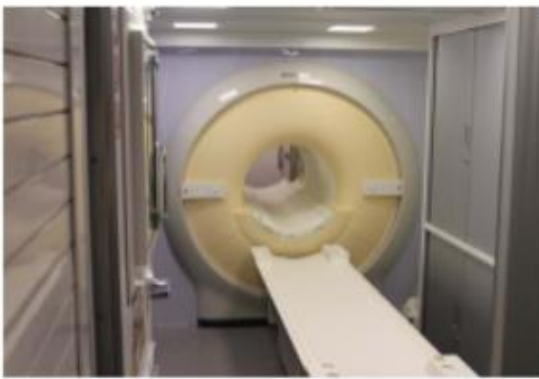
**Siemens Aera 1.5T (MR41)**

Trailer



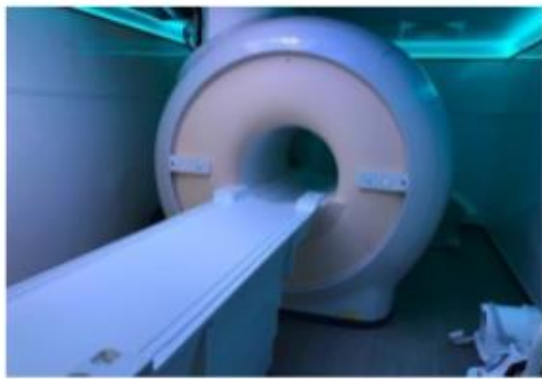
**Siemens Aera 1.5T (MR40)**

Trailer



**Philips Ingenia 1.5T (MR39)**

Trailer



**Philips Ingenia 1.5T (MR38)**

Relocatable



**Siemens Aera 1.5T (MR36)**

Relocatable



**Siemens Aera 1.5T (MR35)**

Relocatable



**Siemens Aera 1.5T (MR34)**

Relocatable



**Philips Ingenia 1.5T (MR33)**

Trailer



**Siemens Aera 1.5T (MR32)**

Trailer



**Siemens Aera 1.5T (MR31)**

Trailer



**Philips Ingenia 1.5T (MR30)**

Trailer



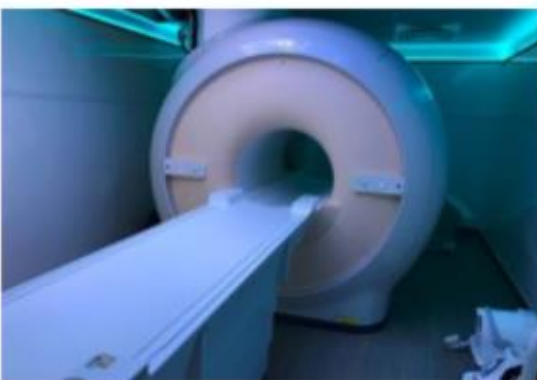
**Siemens Aera 1.5T (MR28)**



**Siemens Aera 1.5T (MR27)**



**Siemens Aera 1.5T (MR26)**



**Philips Ingenia 1.5T (MR23)**

Relocatable



**Philips Achieva 1.5T (MR12)**

Relocatable



**Philips Ingenia 1.5T (MR11)**

Trailer



**SIEMENS SOMATOM go.Top (CT24)**

Relocatable



**GEHC Revolution EVO (CT23)**

Trailer



**Canon Aquilion Prime (CT20)**

Trailer



**Canon Aquilion Prime (CT19)**

Relocatable



**Canon Aquilion Prime SP (CT18)**

Trailer



**GE Revolution EVO 128 (CT17)**

Trailer



**Siemens go.Top 128 (CT16)**

Trailer



**Philips Incisive Premium (CT15)**

Trailer



**Canon Aquilion Prime SP (CT14)**

Relocatable



**Canon Aquilion Prime SP (CT13)**

Relocatable



**GE Revolution EVO (CT09)**

Relocatable



**Philips Azurion 7 F12 (IT07)**

Relocatable



**Philips Azurion 7 F12 (IT06)**

Relocatable



**Philips Azurion 7 F12 (IT05)**

Relocatable



**Philips Azurion 7 F12 (IT04)**

Relocatable



REQUEST QUOTE/ENQUIRY FOR ANY OF THE AVAILABLE PRODUCT  
VIA OUR SUPPORT EMAIL  
[info@healthsermedical.org](mailto:info@healthsermedical.org)

